



The Manor

*A Newsletter of The
Equinunk Historical Society
Calder House Museum
Calder Gift Shop
Joel Hill Sawmill*



Volume 43, Issue 1

P.O. Box 41, 1972 Pine Mill Rd., Equinunk, PA 18417-0041

Spring 2026

Telephone: 570-224-6722

E-Mail: EHS22@verizon.net

Website: www.equinunkhistory.com

We are excited to announce the grand opening of the Genealogy and History Room at the Equinunk Historical Society.



The new Genealogy/History Room

In December of 2025, discussions were had about the decline in business for the Calder Shop inside the EHS building. For the past several years there have been a significant decline in sales. A collective decision was made to use the Calder Shop space to better serve the people in our community by creating the Genealogy and History Room. Knowing the wealth of knowledge that Carol Ann MacMaster has to offer in the areas of history and genealogy, it was a logical next step to create a brighter more spacious location for genealogy research.

The former Calder Shop room, is filled with genealogy texts, individual family histories in magazine binders and two filing cabinets filled with genealogy materials. Additionally, there are five bookcases of history books on a wide range of topics including a large section on Wayne County in particular. The Pat Christian collection of books has been gathered together as well.

The former Calder Shop room, is filled with genealogy texts, individual family histories in magazine binders

While all of these books and valuable information have always been available, the new room is much more inviting. Additionally, a children's corner has been developed by Carol Ann with a table filled with children's books and artistic materials to entertain little ones while adults search on their own or with Carol Ann's assistance.

The library is now more spacious via the relocation of some furniture. It is now brighter, safer and easier to travel from the original Calder House to the new addition and to the displays on the second floor. However, before traveling to admire those displays, a stop in the library is well worth your time. There are newly refurbished binders filled with topics ranging from records of home births, historic local homes, one room schoolhouses in the surrounding townships, postcards, stunning photos, calling cards, newspaper articles and other fascinating memorabilia. The binders have been alphabetized and there's a three page index of the binders located next to them. Also to be found in the library section is a selection of fiction books, historic text books, old sheet music and several file cabinets filled with historical information.



The library is now more open and comfortable.

It was an exceptional collaboration of minds, laboring hands and cooperation which made all this possible. While change can sometimes be unsettling, it is our continued hope and desire here at EHS to better serve the community.

We hope you will come down to fully experience and explore your genealogy and further your knowledge of local history. If you would like assistance please call the EHS office at 570-224-6722 and leave a message for Carol Ann MacMaster. The genealogy and library areas are open during normal museum hours.

Contributed by Lisa Muth

PRESIDENT'S MESSAGE



BRINGING IN SPRING, BRINGING IN A NEW SEASON!

As we welcome Spring, we welcome a new season here at your Equinunk Historical Society! With Spring comes the flowers, birds and those pesky insects. So when you come to visit your EHS, plan to visit our gardens around the grounds, and the "Wayne County Art Trail" exhibits mingled with the gardens. This year, we will be showcasing a new "Rain Barrel" exhibit.

Winter is over, so make plans to warm up by visiting both our outdoor and indoor exhibits. There have been some changes inside as well, such as, the closing of The Calder Shop. We want to thank everyone that has been involved with the shop over the years. And, most recently, the hard work put into it by Sherry Zona and Lisa Muth. And for their work put into the gardens!

The former "Calder Shop" has becoming our new and expanded "Genealogy/History" room, making research much easier. It also contains some of our research materials as well. This will leave more room for our library, where you can scroll through books, many of which were published by EHS. Don't forget, we have a large selection of these books for sale!

And yes, The Joel Hill Sawmill and The Cleveland Museum will be opening again this year. It is run and maintained by the "Brotherhood of the Mill" crew! They have worked through the winter to make improvements and repairs. This year there are four weekends on which public demonstrations will be held. Please see page 3 for on dates and times as well as information on all the 2026 program offerings and events.

Of special note our Memorial Day program will take place on Saturday, May 23 and will Honor veteran Art Flynn. A tour of the Equinunk Cemetery with Chuck Heyn will follow. Flags on some of the graves will be placed. The program will end with our annual Ice Cream Social. We wish you all a great spring and look forward to seeing you this summer at the Historical Society.

Best Wishes,
John Schror, President

EQUINUNK HISTORICAL SOCIETY Board of Directors, Staff and Volunteers 2025-2026	
President	John Schror
Vice President	Open
Recording Secretary	Donna Burrowes
Treasurer	Donna Burrowes
Directors	Donna Capone, Art Flynn, Carol Ann Mac Master, Anna Sergi Mike Sergi, Rob Szymanski
Office Manager	Anna Sergi
Building/Grounds	Blair Kobelin, Greg Quaglio
Bookkeeper	Donna DuBois
Curator	Roberta McLane
Corresponding Secretary	Victoria Bradshaw
Genealogy	Carol Ann MacMaster
Hospitality	Donna Capone, Kathy Quaglio
Membership	Anna Sergi, Sherry Zona
Photography	
Program Coordinator	Vacant
Publications	Chris Kobelin
Publicity	Linda Wescott, Donna DuBois, Vicky Bradshaw, Chuck Stroble
Sawmill Committee	Blair Kobelin
"The Manor"	Donna DuBois, Editor
Proofreaders	Carol Ann MacMaster, Donna DuBois

The Equinunk Historical Society Newsletter "The Manor" is published seasonally, three times a year and sent to all members. Additionally, copies are available through the office at the Museum. Materials for publication are always welcome and sought after. Please email or mail submissions to Donna DuBois c/o EHS22@verizon.net or mail them to EHS, PO Box 41, Equinunk, PA 18417

EHS PROGRAM CALENDAR 2026

May 23
Museum Reopens
Honoring Art Flynn
Tour of cemetery – Chuck Heyn
Ice Cream Social

June 6
Ramona Jan
“Cinema Sound & Vision”

June 13
Trish Blauth
“At The Studio”

June 27
Mike Sergi
“Chainsaw Carving Seminar”

July 11, 12
Joel Hill Mill/Cleveland Museum
Tours* & Demonstrations

July 18
Diana Diaz
Photographers’ Secrets for Amazing Photos”

July 19
Jason Smith
“AI Helps Historical Societies”

July 25
Diana Diaz
“The Art of Burning Photos into Wood”

July 26
Art Appreciation Day

August 1
Ayla Diaz
“Self-Expression Using Mixed Mediums”

August 8, 9
Joel Hill Mill/Cleveland Museum
Tours* & Demonstrations

August 15
Elaine Wells
“Summer of the Secret Deal”
Book Series

August 22
Craig Benson
“Joseph Brandt/Archeology”
2 Parts

August 29
Annual Meeting

September 12, 13
Joel Hill Sawmill/Cleveland Museum
Tours* & Demonstrations

September 26
Craig Benson
“250th Anniversary Special Program “

October 3, 4
Joel Hill Sawmill/Cleveland Museum
Tours* & Demonstrations

* Joel Hill/Cleveland Museum Tours
10:00 am and 1:00 pm Saturday; 1:00 pm Sunday.
Call Greg at 570-798-2420 for information.

November 14
Annual Chili Sale; First 100 orders

December 5, 6
Museum Open House – Noon to Four
Sunday Refreshments and Music

First Friday
Calder Café Event November thru April
Doors open at 6:30
Music from 7:15 to 9PM
Call Pat at 570-224-0223

HISTORICAL MARKER UPDATE

The last issue of the Manor detailed our application for a historical marker for the Joel Hill Sawmill. Our most recent correspondence from the Pennsylvania Historical Museum Commission indicated that those markers that relate best to the 250th anniversary of our country would be given priority. At this time, the marker is scheduled to be manufactured sometime this fall. The installation and dedication will likely be scheduled for Spring of 2027.

JOEL HILL SAWMILL AND CLEVELAND MUSEUM

Last fall the wooden cage around the water gate in the mill pond was removed. The cage had been in place for over thirty years and was badly deteriorated. The cage acts as a strainer keeping sizeable debris in the water from entering the turbine which could cause damage. A new cage was constructed from pressure treated lumber in four sections and stored indoors until the ice on the mill pond thawed. Recently, with the return of warmer temperatures, the cage was assembled and fastened in place.



The completed cage ready for installation.



Frank Iorio carefully locates the position.



Final adjustments and settling.



Debris is removed from under the cage and inside.



Cage secured in place.



Ready to run once again.

Last summer the crew began painting machinery in the Cleveland Museum. Two manually-operated machines were disassembled and painted as well as several sheet metal fabricating rollers. Despite their advanced age, each looks like new. We recently completed refurbishing our twenty six-inch band saw. The machine was completely disassembled, cleaned and painted. The cleaning process is labor intensive and takes much attention to detail to remove one hundred years of built up grease, paint and dirt. The next machine on the list has already been started. No doubt that it will take several years to complete this initiative. Join us for a tour this summer to see our progress.



Fred Blauth uses an angle grinder with a wire wheel to remove stubborn materials.



Dave Grever cleans parts with solvent and "elbow grease".



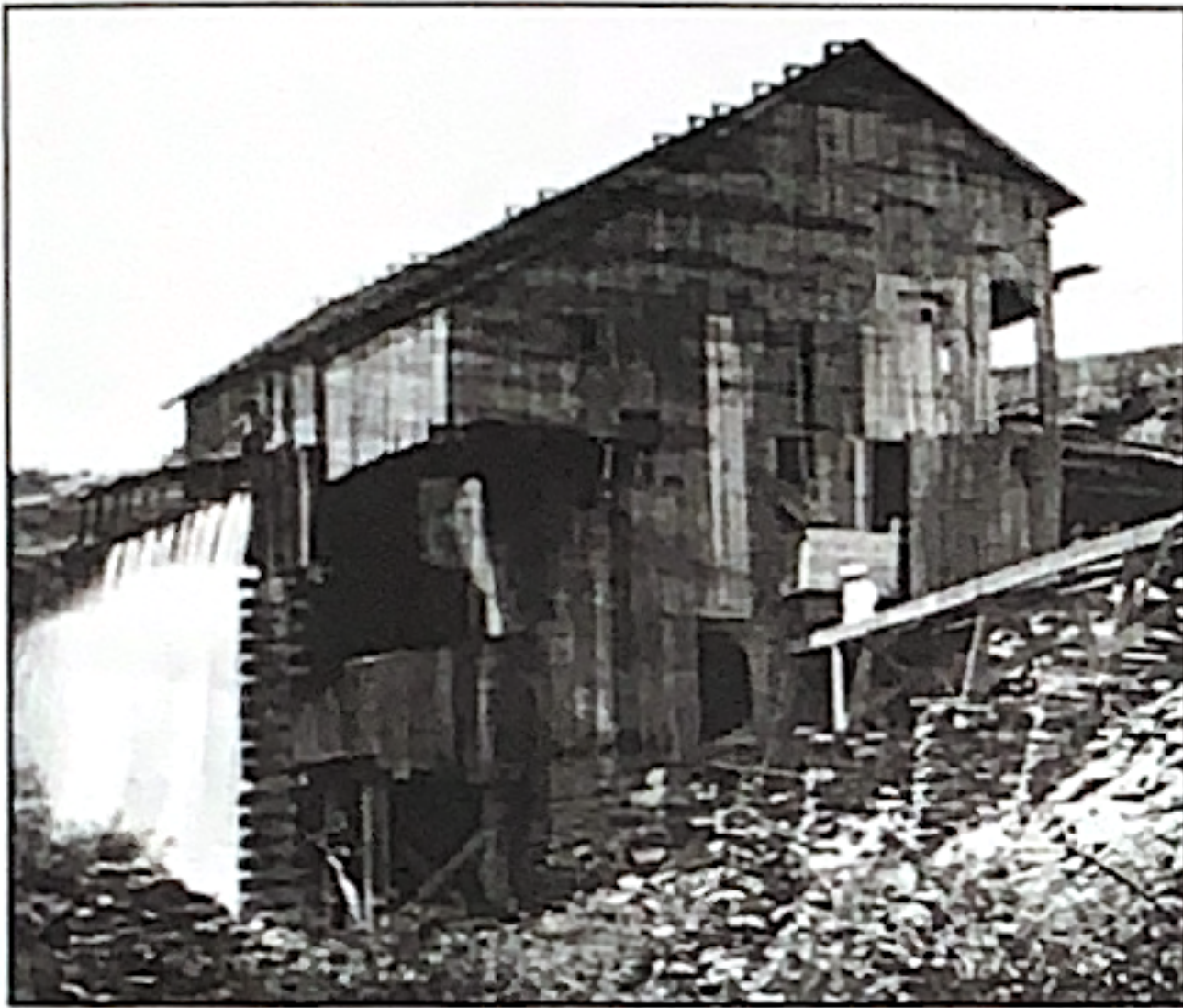
Newly painted frame ready for reassembly.



Completed band saw.

JOEL HILL SAWMILL AND CLEVELAND MUSEUM

When the sawmill was in operation, thousands of board feet of lumber were sawed annually. But, piles of scrap wood also accumulated daily. Much of it was available to the public for use in cook stoves and fireplaces. The chop saw, which still functions although it is disconnected, was used to cut the "slab wood" into manageable lengths. The mill was original constructed with a trestle and cart. It was replaced with a chute, suspended by a cable which allowed it to be positioned laterally. A wagon or pickup truck could be placed below the chute to catch scrap wood as it was sawed. Recently, a short reproduction chute was constructed and put in place to convey the concept.



A trestle and cart can be seen at the extreme right in this pre 1903 photo



This snow covered chute can swing side to side and was much quite efficient.



The reproduction chute in place.

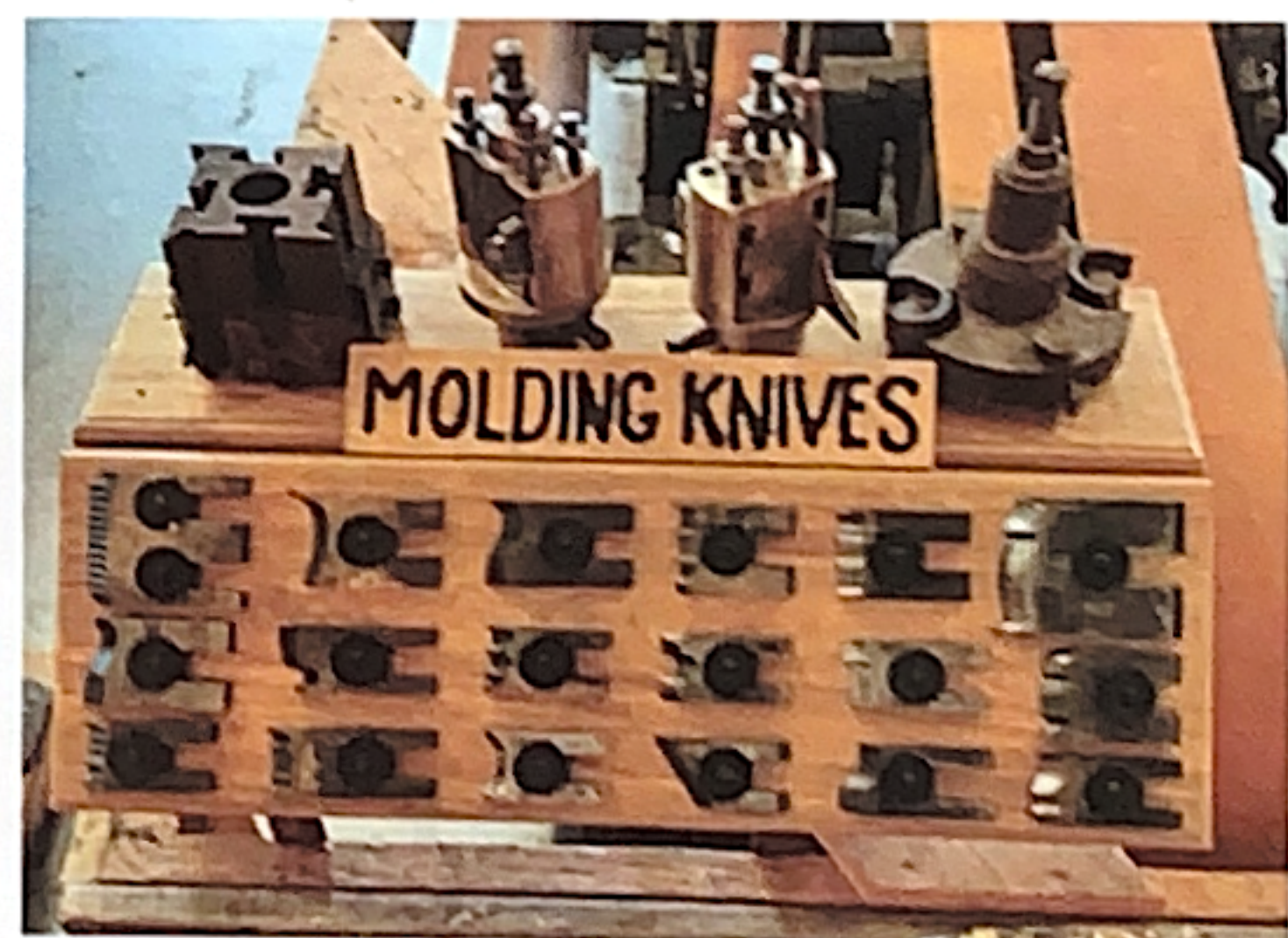
WHAT'S NEW THIS SEASON?



New lighting was recently added to the head saw to enhance visitor viewing of the saw and carriage.



A floor repair was made around the rope from the bull wheel, eliminating a trip hazard.



A display of shaped cutters and cutter holders now is in place to compliment the 4-sided molding machine.



Sheet-metal seaming tools are now displayed, with examples of use, below the stove pipe seaming roller.



Newly organized, mounted and displayed.



Some Tuesdays were too cold to work this winter. Breakfast gathering was a option!

GONE, BUT NEVER FORGOTTEN



Helen Adams – 91 – March 9, 1934 - March 5, 2026 Life Member Helen Adams was an institution, deserving of all the wonderful comments from friends and associates alike. She was very involved with several local Historical Societies, including the Equinunk Historical Society. Helen would call often with ideas for programs, genealogy information or to volunteer to do a program for us, or just chat, and we were able sometimes to answer her questions. Her attention to detail was legendary, and she was loved and respected throughout her 55 year teaching career, and all her many pursuits.



Dorothy Brown -103 – June 5, 1922 - February 11, 2026 Dorothy was a hardworking farm wife, demonstrating strength and resilience in all her endeavors with enthusiasm. In addition to her son Richard Brown and stepdaughter Judith Mohn (William) grandchildren and great-grandchildren, she is also survived by son and member Gerald Brown (Margaret) who served as the first webmaster for the Society



Helen (Hathaway) Freedman – 79 -June 26, 1946 - December 18, 2025 A Life Member and supporter of the Society, Helen devoted her life to her family and community, volunteering for many different organizations, including being a devoted member of her church in Brevard, NC. She was extremely well organized and efficient in all she was involved with. Helen always put others first and will be sorely missed by all who knew her. (She was a loving sister to our Genealogist, Carol Ann MacMaster.)



Albert Rice - 82 – October 28, 2025 A longtime member of the Society, Albert was very active in his community and supporter of the Society, along with his wife Geri, who predeceased him. They loved traveling and fishing among many other pursuits, and spending time with their son and daughter, two granddaughters and one great-granddaughter.



Joyce Skinner – 77 – September 12, 1948 - March 1, 2026 In her quiet and unassuming way, Joyce left her mark on many people as she visited and cared for others, including her aunt, late Life Member Orvetta “Midge” Stevenson, who was the last surviving member of her branch of the Skinner family. She had a strong faith and adored her family, spending time with them creating special memories.



Roger Swendsen – 87 – September 13, 1938 - January 30, 2026 Life Member Roger has been a wonderful supporter for the Society for many years. Primarily serving as historian for his hometown of Tyler Hill and Damascus, he had a lifelong passion for the history of the area. For years he came to EHS to do research, share historical stories, and help us with several extensive projects. There are artifacts, papers and so much more that we are blessed to have thanks to him.



Calvin Howard Teeple – 78 -December 26, 1947 - March 29, 2026 Howard was a friend and contributor in many ways to the Society along with several members his family who are long time members. Back when he wrote a column for the newspaper we would speak often on many subjects, especially genealogy information on his family and many other families in the area. He was very knowledgeable and loved a good conversation. All of these missed by all who knew him.

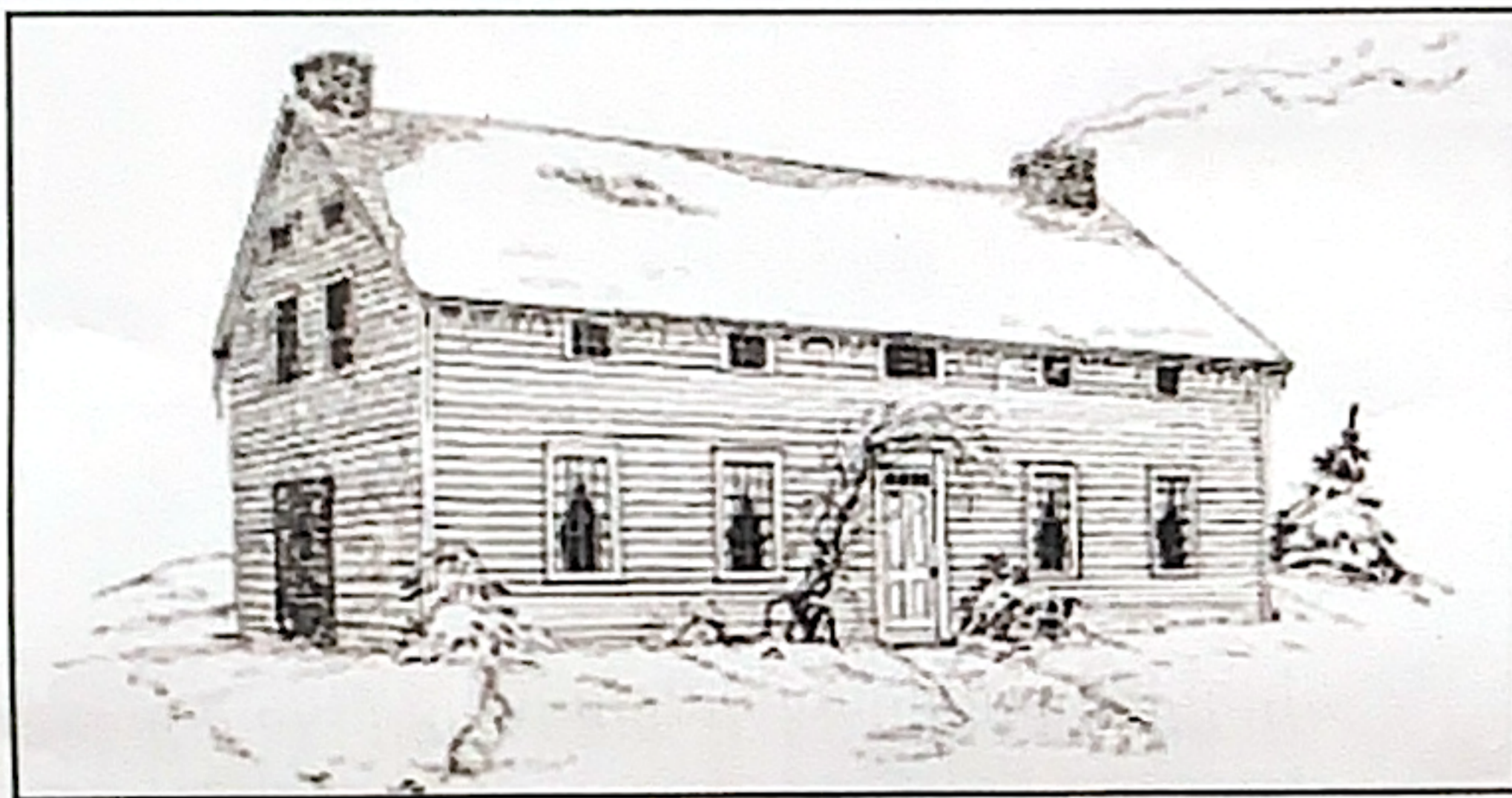
Space does not permit the listing of all the amazing contributions of each and every one of these people to uphold our purpose, namely collecting, preserving and educating people on the history of the area. They will be remembered and missed by all who knew them.

CALDER CAFE



Despite a bitterly cold winter we managed to gather for five of the six "first Fridays" this season. Our regulars, Art, Barbara, Sandy, Pat, Mike, Katt, and John kept the season and evenings moving along. We also had many performers joining us a few times in the course of the season: Carol and Aldo, Nick and Cathy Burnitt. All very welcome when they could make it out. One of the highlights at the end of the season was a song Mike wrote about volunteering at the mill. Certainly made me look forward to warmer weather and mill

tours. Thanks to all involved who make the evening happen including Linda for publicity and Kathy for staffing our kitchen area. Despite the cold I think everyone enjoyed the opportunity to get out, visit with friends and neighbors and enjoy some live music.



THE LAND/SKINNER HOUSE

The Land House (also called the Skinner House), located on river Road just north of Milanville, PA, was built in 1796 by John Land, son of early settler Robert Land. It is said to be the oldest house in Wayne County.

Once a three-story house, it was reduced to one and a half stories by Nathan Skinner, who owned the house after John Land. He was a rafter, following in the footsteps of his famous father, Daniel Skinner, who sent the first raft down the Delaware River in 1764 with help from Bo'sun Parks. Nathan was born in 1777 and built another home in the same area in 1815. He died in 1856, This second house remained in the Skinner family until circa 1897. He had 8 sons, which explains why there are many today in the area who still carry the name in their family ancestry. Byron White bought the Land House in the 1980's and saved it from demolition and it is still lived in today.

The story of the vintage missing bowls pictured at right, was handed down through the generations and they were said to belong to a Skinner family who lived in the Land House at one time, although it could not be proven. We know a little about them and have determined that the larger bowl was manufactured by the Ruckels Company which started in 1901 and the smaller one made by the Robinson Ransbottom Company which formed in 1919. With more research we may find more information on this interesting history.



Pictured here is Ruth Price holding a blouse made by her mother Lena Elizabeth Lingg, while living in Lieman, Germany. She was born there on March 21, 1902. The blouse was a project made in 1914 (112 years ago) in her final term of Homemaking class. Lena moved to the US in 1923, eventually settling permanently in Equinunk, with husband Robert W. Gehrig and their four children. Ruth is the last of these children, and still very active in her 90's.

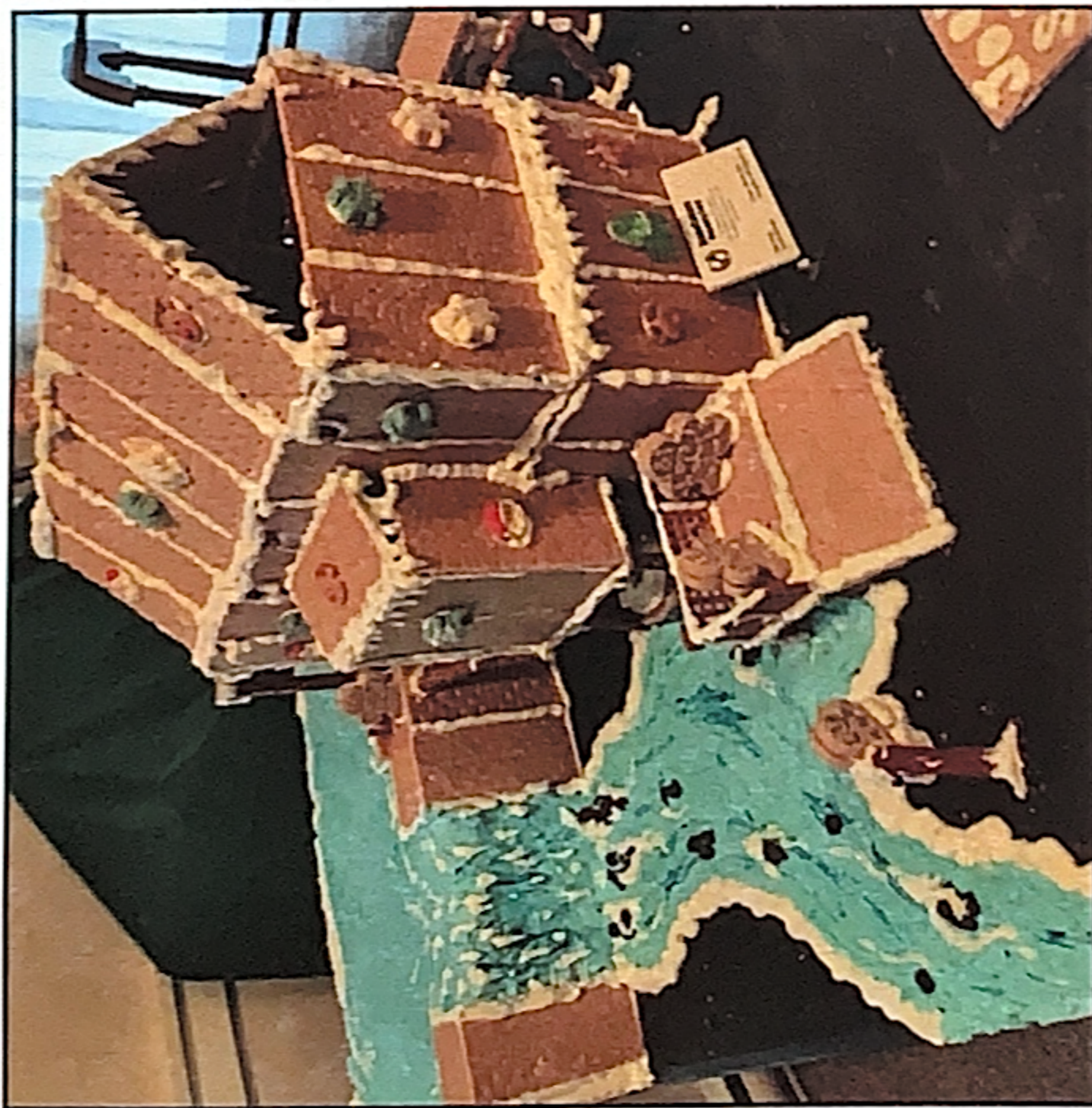


EQUINUNK HISTORICAL SOCIETY
PO BOX 41
EQUINUNK, PA 18417



ANNUAL MEMBERSHIP INFO:	
Individual	\$20
Family	\$30
Junior	\$2
Lifetime	\$125
Corporate	\$50

327638538 0041



For Christmas, Mike Sergi constructed his complete version of the Joel Hill Gingerbread Sawmill to the viewing enjoyment of all. Mike included all the features; the turbine, deck, saw, sawyer, log ramp, falls and visitors. Mike will be presenting a program this summer on chainsaw carving. Please see the program schedule on page three for details.